



## **ORIENTEERING 2010** **Borlänge Sweden**

July 19-23  
17 th World University  
Championship

WUOC 2010  
P.O. Box 98  
S-781 21 Borlänge  
Sweden

Phone (00)46-24-36 80 26  
Fax (00)46-24-38 66 00  
e-mail: info@wuoc2010.se



# **XVII WORLD UNIVERSITY ORIENTEERING CHAMPIONSHIP**

**19 th July - 23 th July 2010  
BORLÄNGE, SWEDEN**

***Bulletin 1  
1 st July 2009***



## ORIENTEERING 2010 Borlänge Sweden

July 19-23  
17 th World University  
Championship

WUOC 2010  
P.O. Box 98  
S-781 21 Borlänge  
Sweden

Phone (00)46-24-36 80 26  
Fax (00)46-24-38 66 00  
e-mail: info@wuoc2010.se



## IN THIS BULLETIN

- 1 Welcome
- 2 Organizing Committee
- 3 Event Controllers
- 4 Program
- 5 Rules
- 6 Participation
- 7 Event Centre and Accommodation
- 8 Embargoed Areas
- 9 Training Opportunities
- 10 Further information

## Welcome to WUOC 2010 in Borlänge, Sweden

*Dear Orienteering friends,*

*On behalf of the municipality of Borlänge I would like to welcome competitors, team leaders and guests to Borlänge and XVII World University Orienteering Championship 2010.*

*I would also like to welcome participants of the public competitions held during WUOC.*

*Borlänge has, despite its youth, played an important role in the history of the region Dalarna. The modern society is built upon the solid foundation of industrial traditions. We also offer excellent conditions for sport and outdoor-recreation through modern sport facilities and nature areas.*

*I hope you will have a pleasant stay in Borlänge, and the municipality will support the organizers in every possible way in their effort to achieve fair and challenging competitions.*

*Nils Persson*

**Executive mayor, Borlänge**







## ORIENTEERING 2010 Borlänge Sweden

July 19-23  
17 th World University  
Championship

WUOC 2010  
P.O. Box 98  
S-781 21 Borlänge  
Sweden

Phone (00)46-24-36 80 26  
Fax (00)46-24-38 66 00  
e-mail: info@wuoc2010.se



## 2. Steering Committee

Johanna S:t Clair Renard	Swedish University Sports Federation	President of Steering Committee
Nils Persson	Municipality of Borlänge	
Ulf Öhrman	Swedish University Sports Federation	
Bengt Lindström	University of Dalarna	
Elisabeth Löfås	Stora Tuna OK	
Mats Bayard	Stora Tuna OK	
Håkan Rystedt	Municipality of Borlänge	
Stig Wiklund	Stora Enso	
Pekka Nikkulainen	Swedish Orienteering Federation	

## 3. Event Controllers

Ola Kåberg FISU Controller

## 4. Program for WUOC2010

Date			
July 18	Sunday	Arrival	Opening of event centre
July 19	Monday	Model event	Opening ceremony
July 20	Tuesday	Long distance	
July 21	Wednesday	Sprint distance	
July 22	Thursday	Middle distance	
July 23	Friday	Relay	Closing ceremony, banquet
July 24	Saturday	Departure	

## 5. Rules

The World University Orienteering Championships 2010 will be organized according to the Competition Rules for IOF Foot Orienteering Events (edition of January 1, 2007) and according to the Regulations for FISU Events.





## ORIENTEERING 2010 Borlänge Sweden

July 19-23  
17 th World University  
Championship

WUOC 2010  
P.O. Box 98  
S-781 21 Borlänge  
Sweden

Phone (00)46-24-36 80 26  
Fax (00)46-24-38 66 00  
e-mail: info@wuoc2010.se



## 6. Participants

### Participant of WUOC2010

- have to be students who are currently officially registered as proceeding towards a degree or diploma at the university or similar institute whose status is recognized by the appropriate national academic authority of their country, or former students who have obtained their academic degree or diploma in the year 2009;
- must be at least 17 and less than 28 years of age on January 1<sup>st</sup>, 2010 (date of birth must be between January 1<sup>st</sup>, 1982 and December 31<sup>st</sup>, 1992);
- must have a full passport-holding citizenship of the country they represent.

Each country may enter a team consisting of up to 12 competitors (6 woman and 6 men) and 5 team officials. Maximum number of competitors from each country for participation in different races:

Sprint - 3 men and 3 woman

Long distance - 4 men and 4 woman

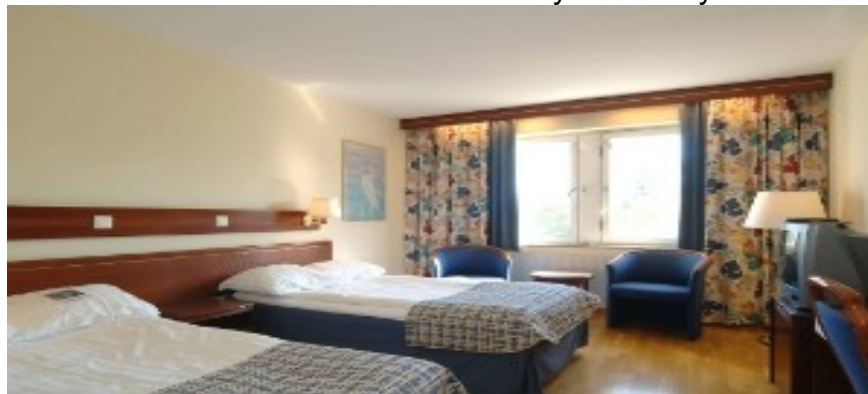
Middle distance - 4 men and 4 woman

Relay -        1 men's team (3 legs)  
                    1 women's team (3 legs)

## 7. Event Centre and Accommodation

The official Event Centre of WUOC2010 will be in Scandic Hotel. This hotel provides high standard accommodation. Meeting rooms and similar facilities will be provided. The hotel is located in the centre of Borlänge. Shopping centers and other facilities like training studios, swimming pools, etc. are located close to the hotel.

Also, all participants and officials will be accommodated in Scandic Hotel. There are rooms with 2 - 3 beds, shower and TV available. Period of accommodation last from July 18 to July 24.







## ORIENTEERING 2010 Borlänge Sweden

July 19-23  
17th World University  
Championship

WUOC 2010  
P.O. Box 98  
S-781 21 Borlänge  
Sweden

Phone (00)46-24-36 80 26  
Fax (00)46-24-38 66 00  
e-mail: info@wuoc2010.se



INTERNATIONAL  
University Sports



## 8. Embargoed areas

The areas indicated on the map below are embargoed. It is prohibited to enter the embargoed areas for any potential member of WUOC2010 teams (athletes, team officials, medical staff) and others who, through the knowledge of the terrain, may influence the results of the WUOC2010 competitions.



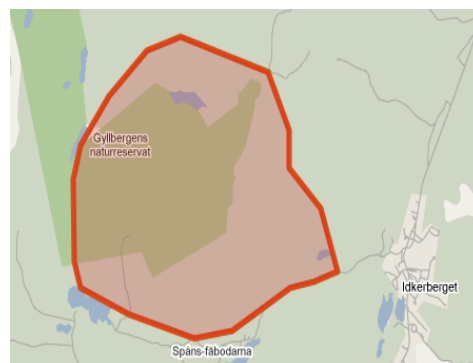
### Long distance

#### Terrain

Forested terrain almost entirely without tracks with many marshes, both large and small

#### Undulation

Medium to high undulations. The hilltops can be rich in detail but the slopes are relatively featureless



#### Run-ability

Good to excellent run-ability. Running speed is however partly restricted by the existence of blueberry and heather ground vegetation.

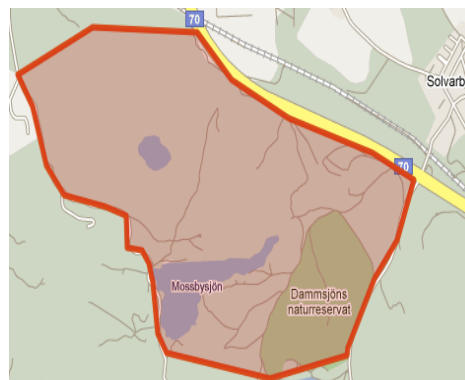
### Middle distance and relay

#### Middle distance

Moderately undulating typical Scandinavian forested terrain with a few small tracks. The vegetation consists of older coniferous with some regenerated parts. Mostly good run-ability although there are some green and felled areas

#### Relay

Moderately undulating sand-dune moraine with a network of tracks with varying size. Mostly good run-ability although there are some green and felled areas.





## ORIENTEERING 2010 Borlänge Sweden

July 19-23  
17 th World University  
Championship

WUOC 2010  
P.O. Box 98  
S-781 21 Borlänge  
Sweden

Phone (00)46-24-36 80 26  
Fax (00)46-24-38 66 00  
e-mail: [info@wuoc2010.se](mailto:info@wuoc2010.se)



## 9. Training opportunities

The areas shown in the "Map – training areas" on [www.wuoc2010.se](http://www.wuoc2010.se) have been designated as official training areas for teams participating in WUOC2010. The maps have been revised in the period 1999-2009.

The training areas have been selected on the basis of relevance for the competitions. The structure of the terrains that will be used, except for the sprint, is of similar nature. All the training areas are considered to be relevant for any of the competitions (except sprint).

Maps can be purchased laser-printed. It is also possible to purchase a CD-rom with the maps in JPEG format and PDF format. The map files may be used for course planning with appropriate software for printing maps and courses.

All controls set out in the training areas must be labelled with the name of the group and the dates when the controls are put out and will be removed. If any help is needed to organize separate training camps, other than the official ones, please send an e-mail to [info@wuoc2010.se](mailto:info@wuoc2010.se)

### Prices

Laser-printed maps, per copy: 3 EUR.

Laser- printed maps with controls, per copy: 5 EUR.

Map files in JPEG format and PDF format, per map: 75 EUR.

We can also offer to set out controls in the forest: per training event, per team: 40 EUR + maps.

## 10. Further information

The contact address for the WUOC2010 Organizing Committee:  
WUOC201, P.O. Box 98, S-78121, Borlänge, Sweden

E-mail: [info@wuoc2010.se](mailto:info@wuoc2010.se)

Web: [www.wuoc2010.se](http://www.wuoc2010.se)

### WUOC Tour:

A 4-days WUOC Tour/public event will be organized in conjunction with the WUOC 2010. For more information see WUOC 2010 web pages.

**Bullentin 2 will be distributed in December 1<sup>st</sup>, 2009**

